

Jellyfish® Filter

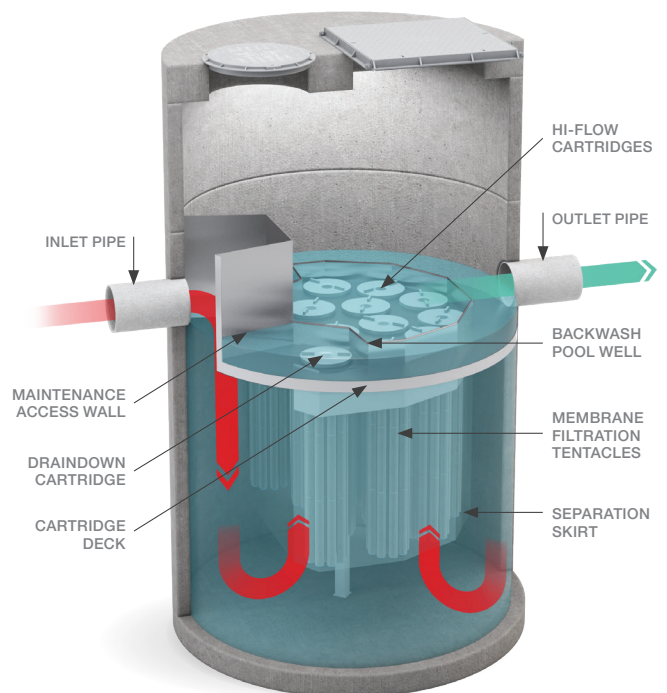
Highest Flow Rate / Lowest Head Loss

The Jellyfish® is a stormwater treatment asset that utilises membrane filtration cartridges with high filtration surface area and flow capacity, typically integrated below ground (within an underground chamber).

The Jellyfish® is designed to remove a range of pollutants, including floatables, trash, oil, debris, suspended solids, and particulate-bound pollutants (e.g. nutrients, metals and hydrocarbons).

How does it work?

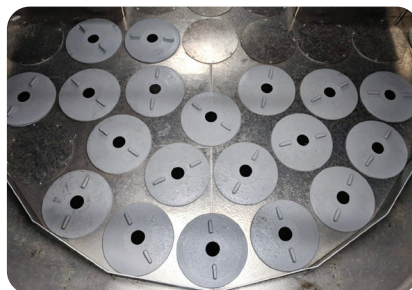
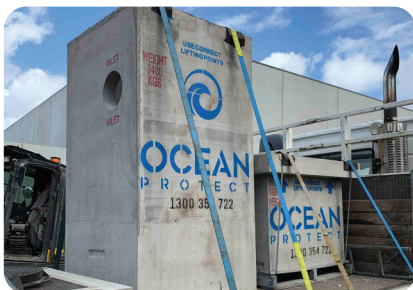
- Stormwater enters the Jellyfish® through the inlet pipe, builds driving head, and traps floating pollutants behind the maintenance access wall
- As the stormwater flows downwards parallel to the separation skirt litter, debris and fine particles (such as sand) are able to settle into the sump
- The driving head causes the water to enter the filtration zone and up through the top of the cartridge(s) into the backwash pool. Once the water has filled the backwash pool, clean water overflows where it exits via the outlet pipe
- After the storm event, the filtered water in the backwash pool flows back through the high flow membrane cartridge(s) into the lower chamber. This passive backwash extends cartridge life, keeping the membrane clean for future events
- The drain down cartridge(s) located outside the backwash pool enables water levels to balance and the deck to drain dry





Features and Benefits

- Large surface area membrane filtration
- High design treatment flow rate per cartridge (up to 5L/s)
- Low driving head (typically 460mm)
- Lightweight cartridges with passive backwash
- Low flux rate promotes cake filtration and reduces occlusion
- Compact system with a small footprint, lower construction cost
- Design flexibility, lower construction cost
- Easy maintenance and low life-cycle cost



Configurations and Applications

The Jellyfish® is available in a variety of configurations: precast manholes and vaults, custom tanks or in situ configurations. The system has been designed for a wide range of applications such as:

- Commercial, industrial and residential development, infill and redevelopment and stormwater quality retrofit applications
- Special projects, including highways, airports, seaports and military installations
- Pre-treatment for further subsequent stormwater management, infiltration, and stormwater harvesting and reuse

Maintenance

To ensure optimal performance, it is advisable that regular maintenance is performed. Typically, the Jellyfish® requires a service every six months, which often includes visual inspection, removal and rinsing of Jellyfish® cartridges and removal of accumulated sediment and floatables. The Jellyfish® cartridges will also need to be replaced approximately every two to five years.

Speak to the team at Ocean Protect who can help you with (or take care of) the maintenance of your Jellyfish®.