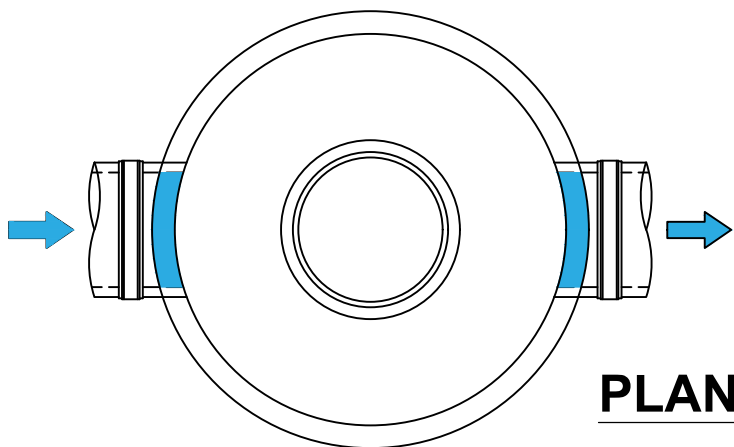


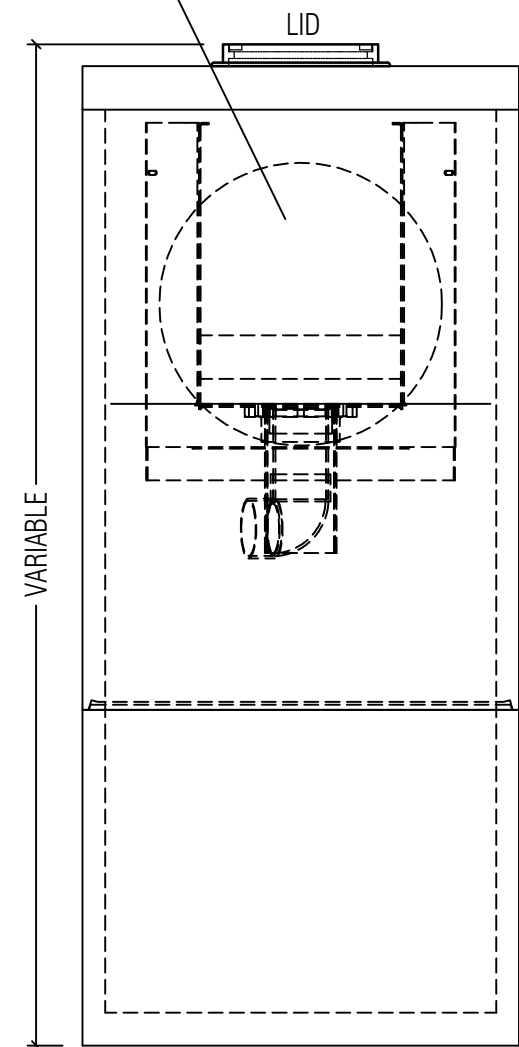
NOT TO SCALE

INLET AND OUTLET
PIPE DIAMETER = **MAX 900mm**

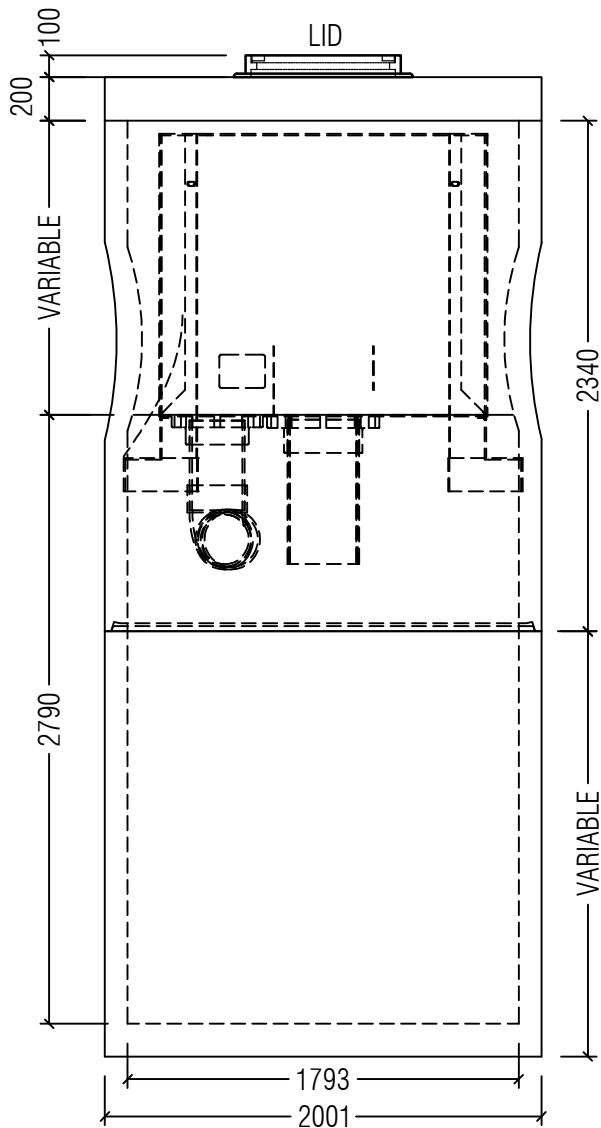


PLAN VIEW

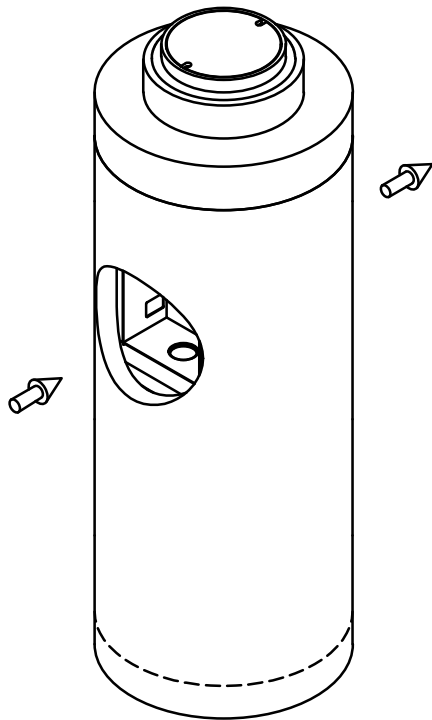
OVERSIZED OPENING FOR
INLET/OUTLET PIPES



LEFT SIDE VIEW



ELEVATION VIEW



ASSEMBLED VIEW

NOTES:

1. STORMWATER TREATMENT SYSTEM (SWTS) SHALL REMOVE 80% OF A SEDIMENT GRADATION WITH AN AVERAGE PARTICLE SIZE OF 240 MICRONS AT THE DESIGNATED TREATMENT FLOW RATE LISTED IN THE TABLE FOR EACH CORRESPONDING MODEL.
2. SWTS REMOVAL EFFICIENCY CLAIM SHALL BE CORROBORATED BY FULL SCALE LABORATORY TEST PERFORMANCE DATA.
3. SWTS MAINTENANCE RECOMMENDATIONS SHALL BE SUPPORTED BY FULL SCALE WASH-OUT TESTING.
4. SWTS SHALL PROVIDE INTERNAL BYPASS OF FLOWS THAT EXCEED THE TREATMENT FLOW RATE.
5. SWTS MAXIMUM HYDRAULIC CAPACITY MAY VARY DEPENDING UPON THE INLET PIPE DIAMETER, MATERIAL AND SLOPE.
6. SWTS INVERTS IN AND OUT SHALL BE AT THE SAME ELEVATION. INLET AND OUTLET PIPES MUST BE 180° FROM EACH OTHER.
7. MINIMUM RIM TO INVERT DISTANCE MAY BE REDUCED DEPENDING UPON ACTUAL PIPE DIAMETER. CONTACT OCEAN PROTECT FOR SITE SPECIFIC INFORMATION.
8. PIPE SIZE MAY BE SMALLER THAN THE MAXIMUM PIPE SHOWN ON THE TABLE; SEE SITE PLAN FOR PIPE SIZE.
9. PURCHASER SHALL NOT BE RESPONSIBLE FOR ASSEMBLY OF INTERNAL COMPONENTS
10. ACCESS FRAME AND COVER SUPPLIED WITH SYSTEM, NOT INSTALLED. SWTS MAY ALSO HAVE A GRATED INLET COVER (NOT SHOWN).
11. PURCHASER TO PREPARE EXCAVATION AND PROVIDE LIFTING EQUIPMENT.
12. VORTSENTRY HS BY OCEAN PROTECT:
SYDNEY (AU) PHONE: 1300354722

This drawing is for the purpose of specifying stormwater treatment equipment to be furnished by OCEAN PROTECT and may only be transferred to other documents exactly as provided by OCEAN PROTECT.



PHONE: 1300 354 722

www.oceanprotect.com.au

OCEAN PROTECT
VORTSENTRY MODEL HS18
STORMWATER TREATMENT SYSTEM
GENERAL ARRANGEMENT

DRAWING

1

A

DATE: 10.08.2018

SCALE: N.T.S.

FILE NAME: VSHS18-1A

DRN: J.S

CHK: W.J