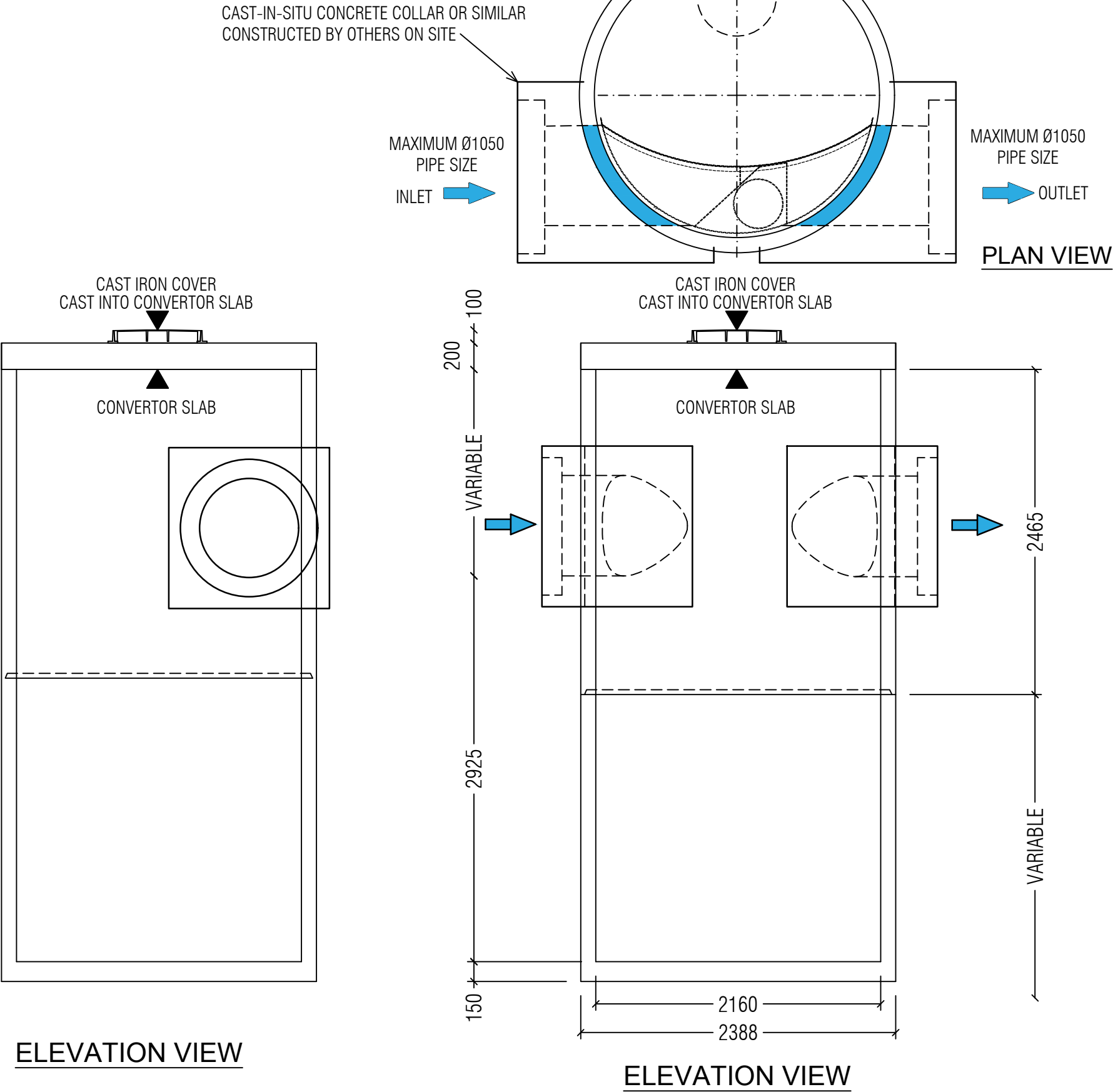
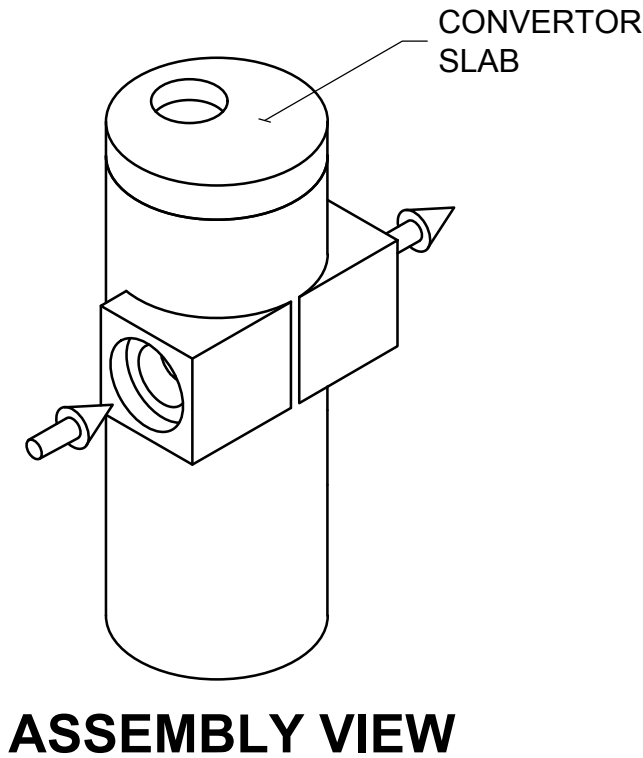


NOT TO SCALE



NOTES:

1. STORMWATER TREATMENT SYSTEM (SWTS) SHALL BE DESIGNED TO MEET PERFORMANCE GOALS BASED ON FULL SCALE LABORATORY PERFORMANCE DATA.
2. SWTS SHALL BE DESIGNED TO RETAIN FLOATABLES AND TRAPPED SEDIMENT AT FLOW RATES UPTO AND INCLUDING PEAK TREATMENT CAPACITY.
3. SWTS INVERTS IN AND OUT SHALL BE AT THE SAME ELEVATION
4. SWTS SHALL NOT BE COMPROMISED BY EFFECTS OF DOWN STEAM TAILWATER.
5. SWTS SHALL HAVE NO INTERNAL COMPONENTS THAT OBSTRUCT MAINTENANCE ACCESS.
6. PIPE ORIENTATION MAY VARY. SEE SITE PLAN FOR SIZE AND LOCATION.
7. PURCHASER SHALL BE RESPONSIBLE FOR ASSEMBLY OF INTERNAL COMPONENTS.
8. MANHOLE FRAME AND COVER SUPPLIED WITH SYSTEM NOT INSTALLED.
9. PURCHASER TO PREPARE EXCAVATION AND PROVIDE LIFTING EQUIPMENT.
10. SWTS BY OCEAN PROTECT:  
SYDNEY (AU) PHONE: 1300 354 722



(ALUMINIUM COMPONENTS OMITTED FOR CLARITY)



PHONE: 1300 354 722

www.oceanprotect.com.au

OCEAN PROTECT  
VORTCAPTURE MODEL VC70  
2100 DIAMETER PRECAST MANHOLE CHAMBER  
STANDARD PRODUCT DRAWING

DATE: 21.08.2018

SCALE: N.T.S.

FILE NAME: STD-VC70-2A

DRN: J.S

CHK: W.J

DRAWING

2

A