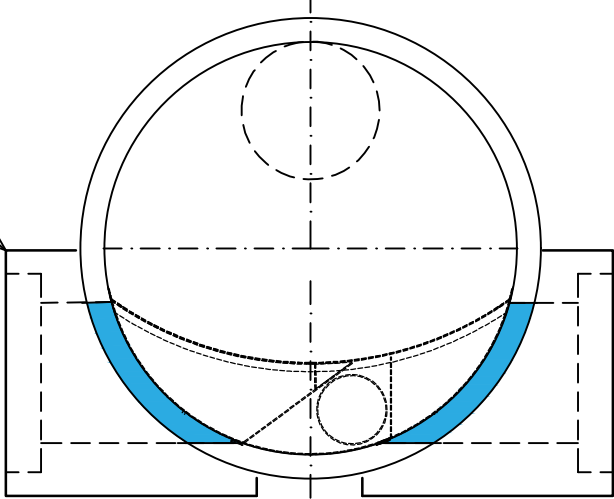


NOT TO SCALE

CAST-IN-SITU CONCRETE COLLAR OR SIMILAR
CONSTRUCTED BY OTHERS ON SITE

MAXIMUM Ø600
PIPE SIZE

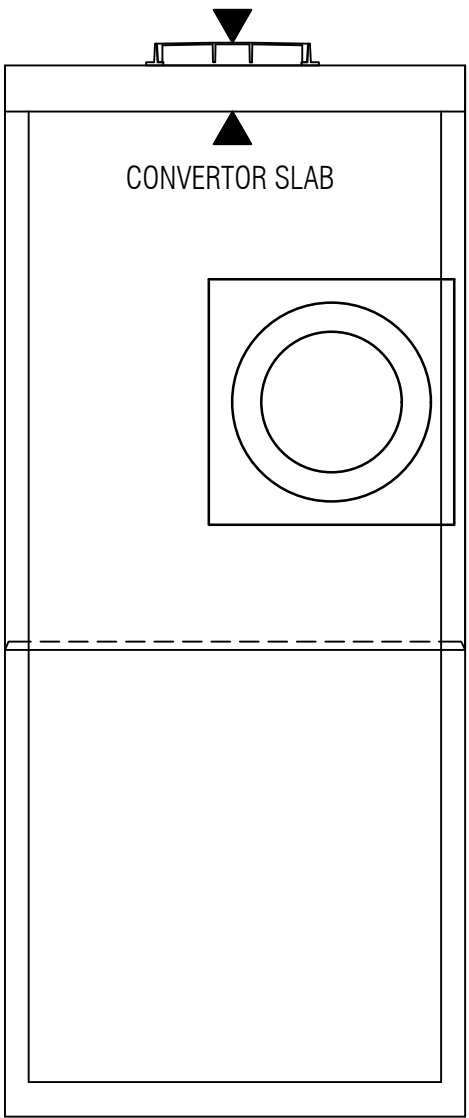
INLET



MAXIMUM Ø600
PIPE SIZE

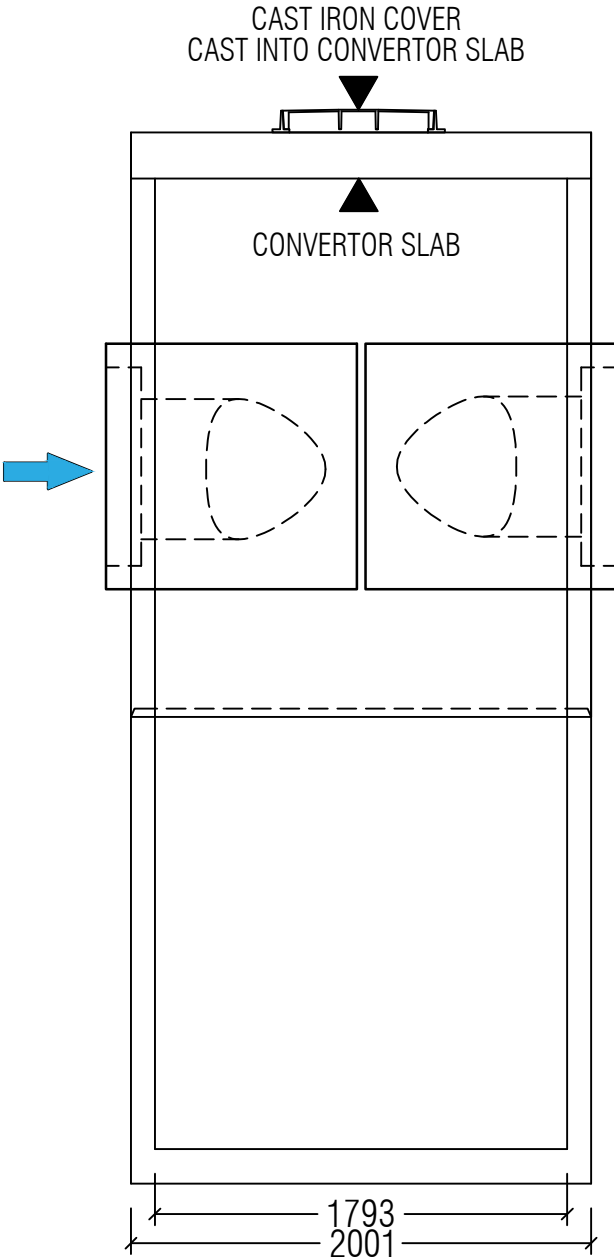
OUTLET

PLAN VIEW



LEFT SIDE VIEW

200
100
VARIABLE
2650

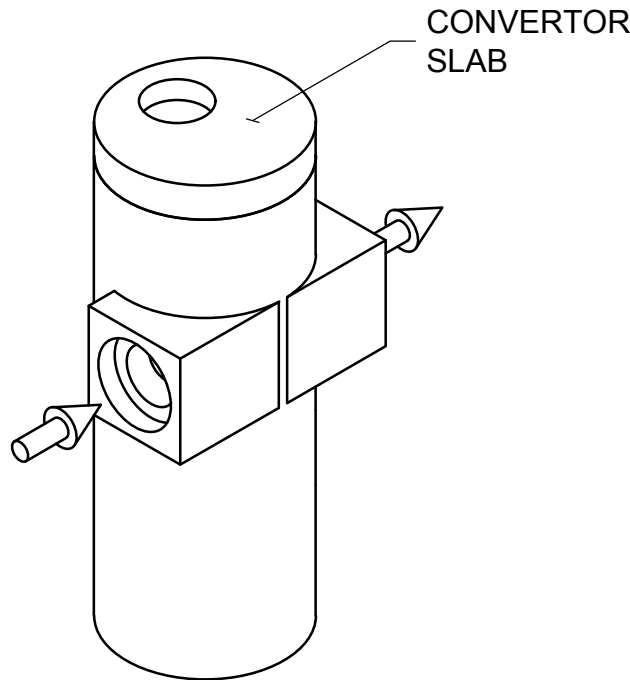


ELEVATION VIEW

CAST IRON COVER
CAST INTO CONVERTOR SLAB

CONVERTOR SLAB

2340
VARIABLE



ASSEMBLY VIEW

NOTES:

1. STORMWATER TREATMENT SYSTEM (SWTS) SHALL BE DESIGNED TO MEET PERFORMANCE GOALS BASED ON FULL SCALE LABORATORY PERFORMANCE DATA.
2. SWTS SHALL BE DESIGNED TO RETAIN FLOATABLES AND TRAPPED SEDIMENT AT FLOW RATES UPTO AND INCLUDING PEAK TREATMENT CAPACITY.
3. SWTS INVERTS IN AND OUT SHALL BE AT THE SAME ELEVATION
4. SWTS SHALL NOT BE COMPROMISED BY EFFECTS OF DOWN STEAM TAILWATER.
5. SWTS SHALL HAVE NO INTERNAL COMPONENTS THAT OBSTRUCT MAINTENANCE ACCESS.
6. PIPE ORIENTATION MAY VARY. SEE SITE PLAN FOR SIZE AND LOCATION.
7. PURCHASER SHALL BE RESPONSIBLE FOR ASSEMBLY OF INTERNAL COMPONENTS.
8. MANHOLE FRAME AND COVER SUPPLIED WITH SYSTEM NOT INSTALLED.
9. PURCHASER TO PREPARE EXCAVATION AND PROVIDE LIFTING EQUIPMENT.
10. SWTS BY OCEAN PROTECT:

SYDNEY (AU) PHONE: 1300 354 722

(ALUMINIUM COMPONENTS OMITTED FOR CLARITY)



PHONE: 1300 354 722

www.oceanprotect.com.au

OCEAN PROTECT
VORTCAPTURE MODEL VC60
1800 DIAMETER PRECAST MANHOLE CHAMBER
STANDARD PRODUCT DRAWING

DATE: 21.08.2018

SCALE: N.T.S.

FILE NAME: STD-VC60-1A

DRN: J.S

CHK: W.J

DRAWING

1

A