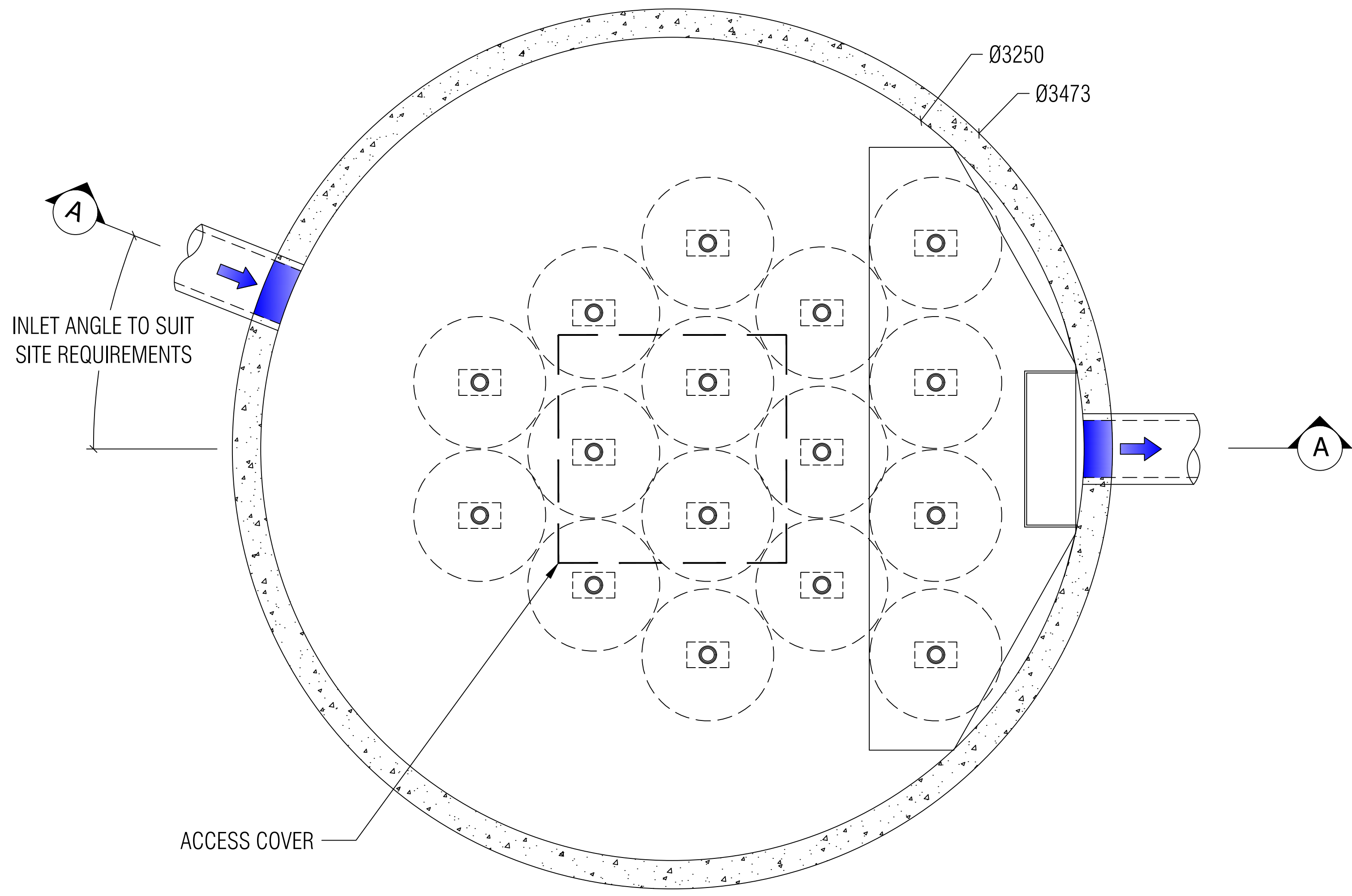
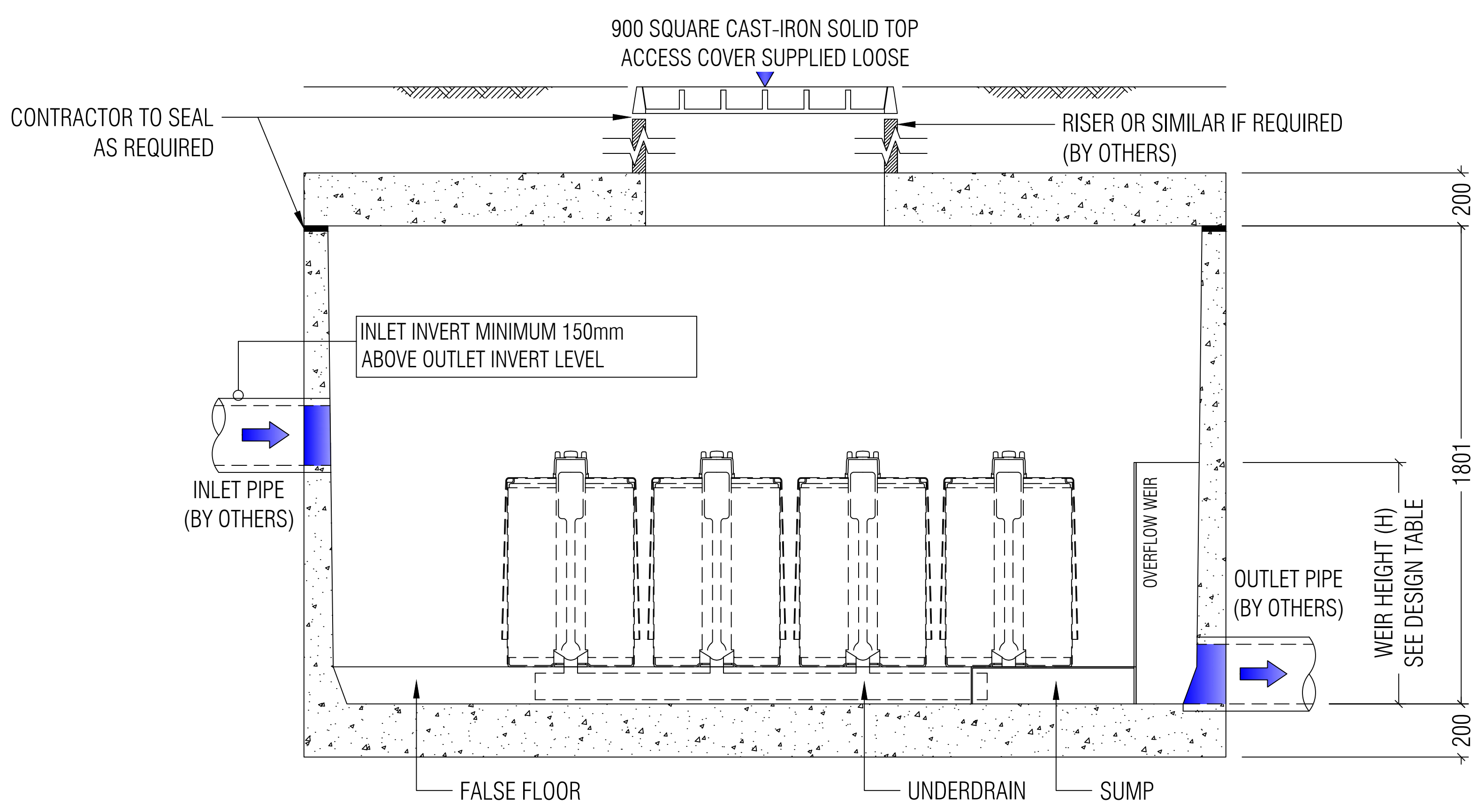


NOT FOR CONSTRUCTION



PLAN

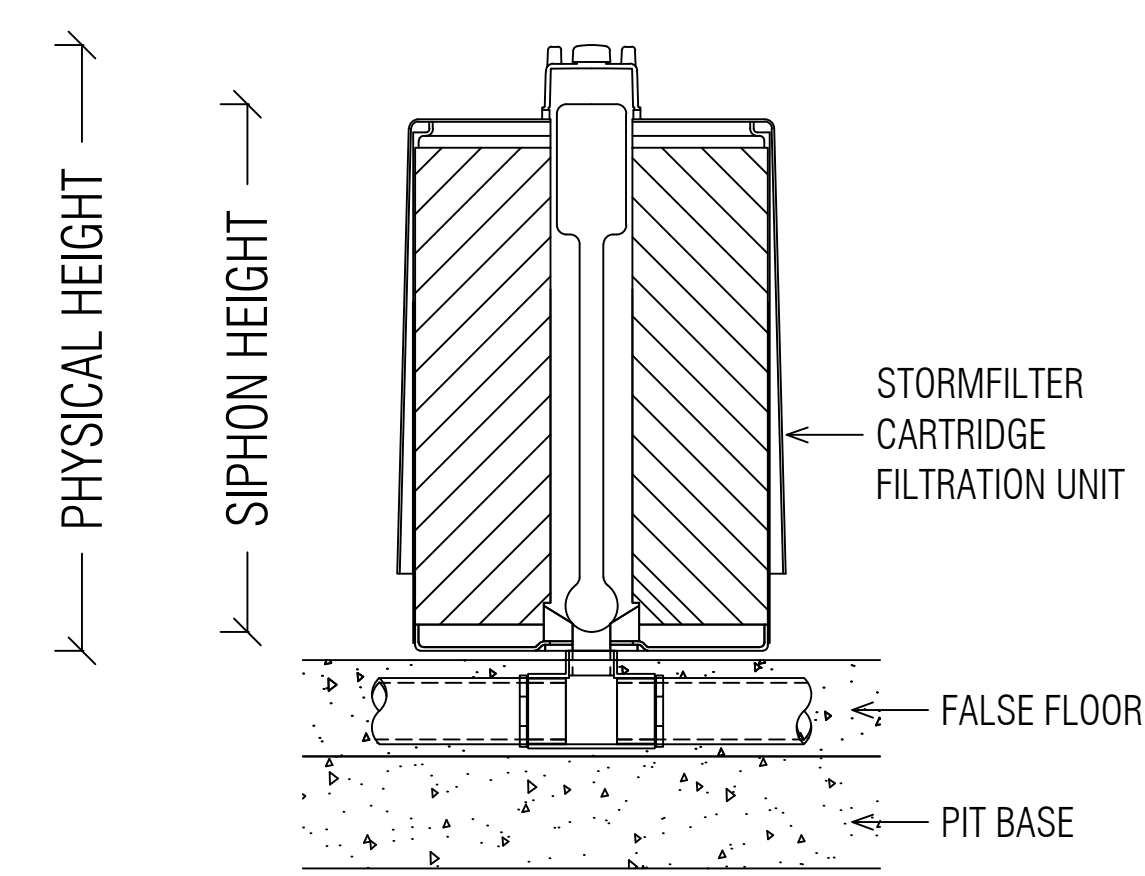


SECTION A-A

STORMFILTER DESIGN TABLE

- STORMFILTER TREATMENT CAPACITY VARIES BY NUMBER OF FILTER CARTRIDGES INSTALLED.
- THE STANDARD CONFIGURATION IS SHOWN. ACTUAL CONFIGURATION OF THE SPECIFIED STRUCTURE(S) PER CERTIFYING ENGINEER WILL BE SHOWN ON SUBMITTAL DRAWING(S).
- FILTER CARTRIDGES SHALL BE MEDIA-FILLED, PASSIVE, SIPHON ACTUATED, RADIAL FLOW, AND SELF-CLEANING. RADIAL MEDIA DEPTH SHALL BE 178mm.

CARTRIDGE NAME / SIPHON HEIGHT (mm)	690	460	310
CARTRIDGE PHYSICAL HEIGHT (mm)	840	600	600
TYPICAL WEIR HEIGHT [H] (mm)	920	690	540
CARTRIDGE FLOW RATE FOR ZPG MEDIA (L/s)	1.6	1.1	0.7
CARTRIDGE FLOW RATE FOR PSORB MEDIA (L/s)	0.9	0.46	0.39



STORMFILTER CARTRIDGE DETAIL

SITE SPECIFIC DATA REQUIREMENTS

STRUCTURE ID	[]		
NUMBER OF CARTRIDGES REQ'D	16		
SIPHON HEIGHT (310 / 460 / 690)	[]		
MEDIA TYPE (ZPG / PSORB)	[]		
WATER QUALITY FLOW RATE (L/S)	[]		
HYDRAULIC CAPACITY (L/S)	90		
PIPE DATA:	I.L.	MATERIAL	DIAMETER
INLET PIPE #1	[]	[]	[]
INLET PIPE #2	[]	[]	[]
INLET PIPE #3	[]	[]	[]
OUTLET PIPE	[]	[]	[]
PRECAST MANHOLE WEIGHT	12,000kg		
PRECAST LID WEIGHT	4,500kg		

GENERAL NOTES

1. PRECAST STRUCTURE SUPPLIED WITH CORE HOLES TO SUIT OUTER DIAMETER OF NOMINATED PIPE SIZE / MATERIAL.
2. PRECAST STRUCTURE SHALL MEET W80 WHEEL LOAD RATING ASSUMING A MAXIMUM EARTH COVER OF 2.0m AND A GROUND WATER ELEVATION AT, OR BELOW, THE OUTLET PIPE INVERT ELEVATION. CERTIFYING ENGINEER TO CONFIRM ACTUAL GROUNDWATER ELEVATION. PRECAST STRUCTURE SHALL BE IN ACCORDANCE WITH AS3600.
3. IF THE PEAK FLOW RATE, AS DETERMINED BY THE SITE CERTIFYING ENGINEER, EXCEEDS THE PEAK HYDRAULIC CAPACITY OF THE SYSTEM, AN UPSTREAM BYPASS STRUCTURE IS REQUIRED.
4. ALL WATER QUALITY TREATMENT DEVICES REQUIRE PERIODIC MAINTENANCE. REFER TO OPERATION AND MAINTENANCE MANUAL FOR GUIDELINES AND ACCESS REQUIREMENTS.
5. SITE SPECIFIC PRODUCTION DRAWING WILL BE PROVIDED ON PLACEMENT OF ORDER.
6. DRAWING NOT TO SCALE.

INSTALLATION NOTES

1. ANY SUB-BASE, BACKFILL DEPTH, AND/OR ANTI-FLOTATION PROVISIONS ARE SITE-SPECIFIC DESIGN CONSIDERATIONS AND SHALL BE SPECIFIED BY CERTIFYING ENGINEER.
2. CONTRACTOR TO PROVIDE ALL EQUIPMENT WITH SUFFICIENT LIFTING AND REACH CAPACITY TO LIFT AND SET THE STORMFILTER STRUCTURE (LIFTING DETAIL PROVIDED SEPARATELY).
3. CONTRACTOR TO APPLY SEALANT TO ALL JOINTS AND TO PROVIDE, INSTALL AND GROUT INLET AND OUTLET PIPES.



PHONE: 1300 354 722 www.oceanprotect.com.au

OCEAN PROTECT
16 CARTRIDGE STORMFILTER SYSTEM
DN3250 MANHOLE
SPECIFICATION DRAWING